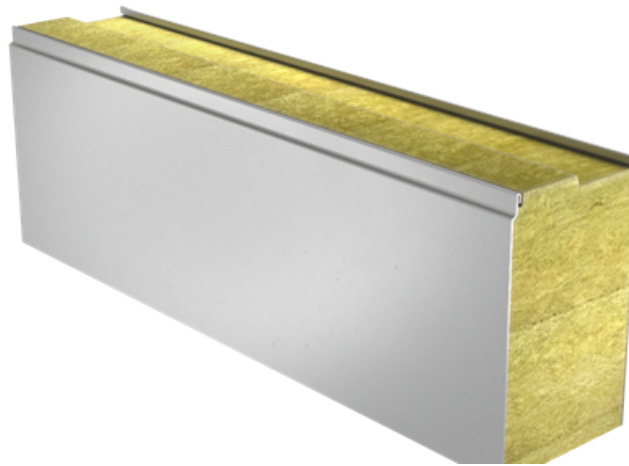


# SANDWICH PANEL SPA I FOR INTERNAL WALL



Sandwich panel **SPA I** is available in thicknesses 100 - 150 mm.

This product, made with the use of advanced production processes, offers **optimal performance** of the designed solution.

With the filling consisting of non-combustible and environmentally friendly hard mineral wool, this sandwich panel ensures **excellent fire resistance**. Properly milled core increases **air-tightness** and contributes to **outstanding sound insulation**.

## Application:

- Internal walls

The information on our website is accurate to the best of our knowledge and understanding. Although every effort has been made to ensure accuracy, the company cannot accept any responsibility for any direct or indirect damages resulting from possible errors or incorrect application of the information of this publication. We reserve the right to make changes.

# PROPERTIES

<b>Model name</b>	Sandwich panel SPA I for internal wall
<b>Standard module width</b>	1200 mm
<b>Minimum length</b>	2000 mm
<b>Maximum Length</b>	13500 mm
<b>External facing thickness</b>	0.50 mm
<b>Internal facing thickness</b>	0.50 mm

## PROPERTIES BY PANEL THICKNESS

Thickness D (mm)	100	125	150
Weight (kg/m <sup>2</sup> )	21.4	24.5	27.4
U-value (W/m <sup>2</sup> K)	0.41	0.32	0.26
Sound insulation Rw (dB)	29	30	30
Reaction to fire	A2-s1, d0	A2-s1, d0	A2-s1, d0
<b>Wall fire resistance values &amp; max span horizontal / vertical orientation (m):</b>			
EI 30	7.5 / 7.5	7.5 / 7.5	9.0 / 8.8
EI 30 (stainless steel)	-	-	7.5 / -
EI 60	7.5 / 7.5	7.5 / 7.5	9.0 / 8.8
EI 60 (stainless steel)	-	-	7.5 / -
EI 90	4.0 / 6.0	7.5 / 7.5	7.5 / 8.8
EI 90 (stainless steel)	-	-	6.0 / -
EI 120	-	7.5 / 7.5	7.5 / 7.5
EI 180	-	-	4.0 / -

All properties are declared in accordance with EN 14509 and related standards.

# COATINGS AND COLOURS

## MATERIALS

Facing	Coating	Corrosivity category	UV resistance	Colours
Internal	Polyester	C3	-	RR20
Internal	Foodsafe Laminate*	C4	-	White
Internal	Stainless steel*	C4	-	-

\*) optional material

UV resistance describes how well the coating is able to keep its original colour and gloss levels in accordance with EN10169. The higher the class, the better the resistance.

Corrosivity categories describe the outdoor climate conditions in accordance with EN12944. The higher the category, the more corrosive environment.

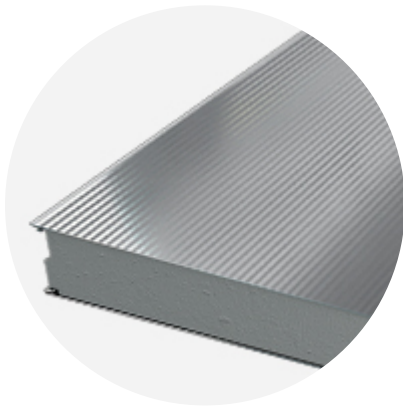
Read more about UV-resistance and corrosivity categories.

## COLOURS

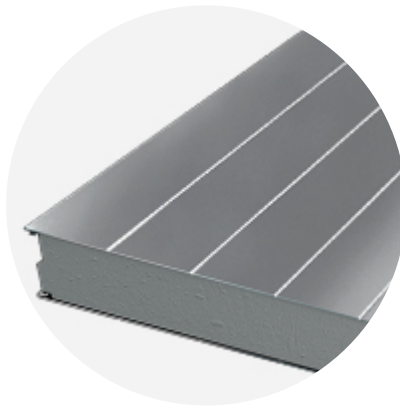


RR20 WHITE

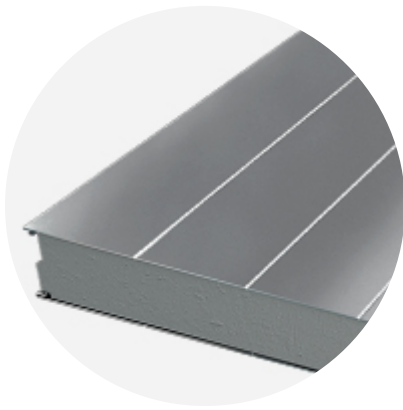
## PROFILES



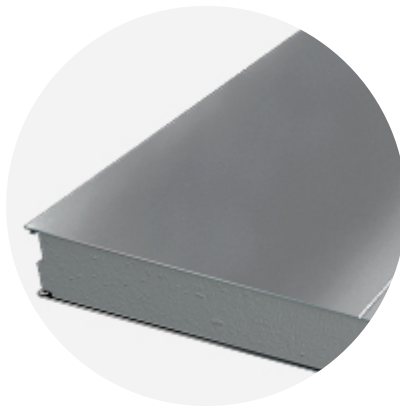
MICRO 15



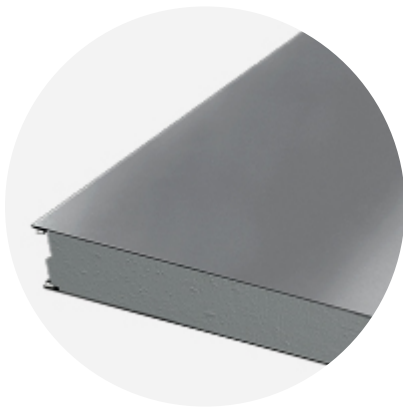
RIB 150



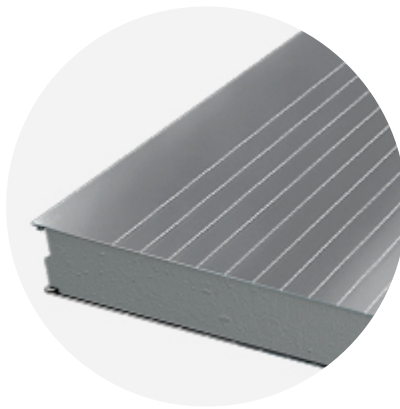
RIB 200



RIB 600



FLAT



LINEAR 50

## DESIGN TOOLS

To make both architectural and structural design work easier, with accurate product information in 3D form, we offer a selection of CAD / BIM -objects and software tools, which can be downloaded from the Software Toolbox portal.

## READY MODELLED BIM OBJECTS

[Download objects for ArchiCAD](#)

[Download objects for Revit](#)

## SOFTWARE TOOL TRAYPAN FOR CHOOSING THE OPTIMAL PANEL TYPE

User-friendly TrayPan software takes into account load, temperature, span, U-value, fire resistance and acoustics.

TrayPan contains two user interfaces:

- Optimisation tool for quick and easy pre-selection
- Designer version for detailed structural analysis.

[Download Traypan](#)

## DETAIL DRAWING (.DWG)



**05 MAY, 2016**

Ruukki-SPA-ENERGY\_external\_walls\_details\_EN

DWG, 2.38 MB



**05 MAY, 2016**

SPA\_compartment\_details\_wall\_en\_16052016

DWG, 464.41 KB



**05 MAY, 2016**

SPA\_compartment\_details\_ceiling\_en\_16052016

DWG, 291.63 KB



**05 MAY, 2016**

SPA external wall details EN

DWG, 2.46 MB

## DETAIL DRAWING (.PDF)



**05 MAY, 2016**

Ruukki-SPA-ENERGY\_external\_walls\_details\_EN

PDF, 1.54 MB



**05 MAY, 2016**

SPA external wall details EN

PDF, 1.53 MB



**05 MAY, 2016**

SPA\_compartment\_details\_wall\_en\_16052016

PDF, 203.33 KB



**05 MAY, 2016**

SPA\_compartment\_details\_ceiling\_en\_16052016

PDF, 135.57 KB

## LOAD & SPAN TABLES FOR DIMENSIONING PANELS AGAINST LOADS



**05 MAY, 2016**

EN\_Sandwich\_panel\_SPA\_Product\_description\_06\_2016  
PDF, 3.02 MB

## SOUND INSULATION VALUES



**15 DEC, 2016**

EN\_Sandwich\_panel\_SPA\_Sound\_insulation\_values\_12\_2016  
PDF, 3.60 MB

## ACCESSORIES

Accessories for sandwich panels include flashings, fasteners, gaskets, and sealing flanges.

These accessories ensure fast assembly, fastening reliability, joint tightness, and aesthetic improvement. They are suitable for external and internal wall surface construction, as well as roofs - for construction projects of various sizes at any destination.



**05 MAY, 2016**

Accessories for SPA sandwich panels  
PDF, 6.09 MB

## INSTRUCTIONS

### ASSEMBLY INSTRUCTIONS

Assembly instructions document includes information about:

- Packing
- Transportation and unloading
- Storing
- Assembling



**05 MAY, 2016**

Assembly-instructions-for-sandwich-panels-SPA  
PDF, 2.16 MB

### MAINTENANCE INSTRUCTIONS

Maintenance instructions document contains information about:

- Washing
- Painting



**06 MAY, 2016**

Ruukki colour coated steel - Maintenance instructions  
PDF, 600.37 KB



**06 MAY, 2016**

Ruukki powder coated facade claddings - Maintenance instructions  
PDF, 602.18 KB

## PRODUCT DESCRIPTIONS

Product description includes information about:

- Panel structure
- Structural dimensioning
- Panel packaging
- Windows and corner panels
- Panel fastening



**05 MAY, 2016**

EN\_Sandwich\_panel\_SPA\_Product\_description\_06\_2016  
PDF, 3.02 MB

## FACADE CLADDING INSTRUCTIONS

Ruukki Forma design instructions explain how to design façade cladding systems on top of Ruukki sandwich panels.



**01 JUN, 2016**

Ruukki Forma design instructions  
PDF, 984.06 KB

## CERTIFICATES & APPROVALS

### DECLARATION OF PERFORMANCE



**16 OCT, 2017**

Declaration of Performance - SPA panels (stainless steel facings)  
PDF, 378.51 KB



**05 MAY, 2016**

Declaration of Performance - Alajärvi MW panels  
PDF, 487.76 KB

## ENVIROMENTAL PRODUCT DECLARATION



**05 MAY, 2016**

Ruukki-Light-weight-sandwich-element-system

PDF, 5.97 MB