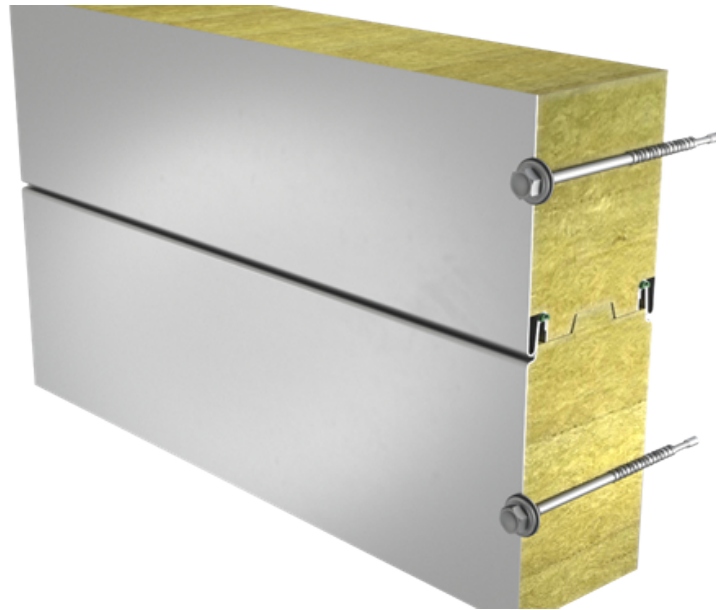


SANDWICH PANEL SPB WEF ENERGY



Sandwich panel **SPB WEF Energy** is available in thicknesses 160 - 230 mm.

It ensures **excellent air-tightness** and **energy efficiency**. The application of special solutions with structural details and assembly services provided by skilled and certified contractors enable to **decrease energy costs** of the building and its **CO2 emissions** up to **20%**. Using Ruukki's solutions you can receive more credits in **LEED** and **BREEAM** certification systems.

The panel's excellent quality ensures **very good fire resistance properties**, thus increasing fire safety of buildings.

The filling consisting of non-combustible and environmentally friendly soft mineral wool with **low thermal conductivity coefficient** ensures **very good thermal insulation** of this panel. Properly milled core increases air-tightness and provides **high sound insulation**.

Application:

- External walls (standard fix)

The information on our website is accurate to the best of our knowledge and understanding. Although every effort has been made to ensure accuracy, the company cannot accept any responsibility for any direct or indirect damages resulting from possible errors or incorrect application of the information of this publication. We reserve the right to make changes.

PROPERTIES

Model name	Sandwich panel SPB WEF energy
Standard module width	1100 mm
Optional module width (B)	1000 mm
Minimum length	2000 mm
Maximum Length	12000 mm
External facing thickness	0.60 mm
Internal facing thickness	0.50 mm
Air Tightness n50 (1/h)	0.6 (Premium), 0.9 (Plus)

PROPERTIES BY PANEL THICKNESS

Thickness D (mm)	160	170	180	200	230
Weight (kg/m ²)	23.6	24.7	25.4	27.2	30.1
U-value (W/m ² K)	0.24	0.23	0.22	0.20	0.17
Sound insulation Rw (dB)	29	29	29	29	29
Reaction to fire	A2-s1, d0	A2-s1, d0	A2-s1, d0	A2-s1, d0	A2-s1, d0
Wall fire resistance values & max span horizontal / vertical orientation (m):					
EI 30	7.5 / 7.5	7.5 / 7.5	7.5 / 7.5	7.5 / 7.5	7.5 / 7.5
EI 60	7.5 / 7.5	7.5 / 7.5	7.5 / 7.5	7.5 / 7.5	7.5 / 7.5
EI 90	7.5 / 4.0	7.5 / 4.0	7.5 / 4.0	7.5 / 4.0	7.5 / 4.0
EI 120	7.5 / -	7.5 / -	7.5 / -	7.5 / -	7.5 / -

All properties are declared in accordance with EN 14509 and related standards.

Changes to sandwich panel fire resistance standards (wall applications)

COATINGS AND COLOURS

MATERIALS

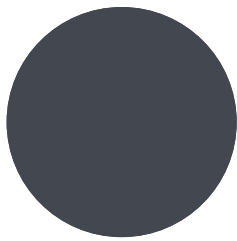
Facing	Coating	Corrosion class	UV resistance	Colours
External	GreenCoat HIARC MAX	C4	Ruv4	RAL7035, RAL9006, RAL9007
External	Polyester	C3	Ruv2-3	RAL1015, RAL5005, RAL7015, RAL7035, RAL9002, RAL9006, RAL9007, RAL9010
Internal	Polyester	C3	-	RAL9002, RAL9010

UV resistance describes how well the coating is able to keep its original colour and gloss levels in accordance with EN10169. The higher the class, the better the resistance.

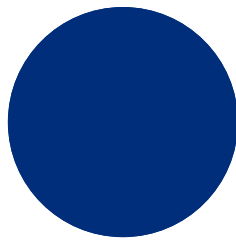
Corrosivity categories describe the outdoor climate conditions in accordance with EN12944. The higher the category, the more corrosive environment.

Read more about UV-resistance and corrosivity categories.

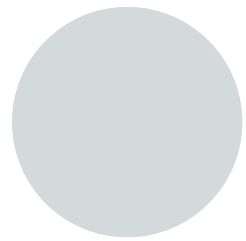
COLOURS



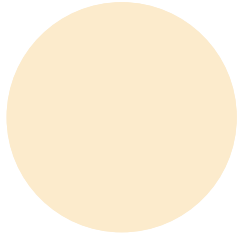
RAL 7015 SLATE GREY



RAL5005 SIGNAL BLUE



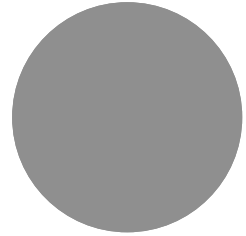
RAL7035 LIGHT GREY



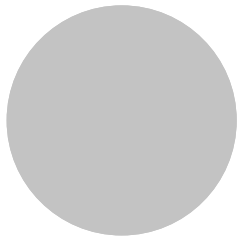
RAL1015 LIGHT IVORY



RAL9002 GREY WHITE



RAL9007 GREY ALUMINIUM

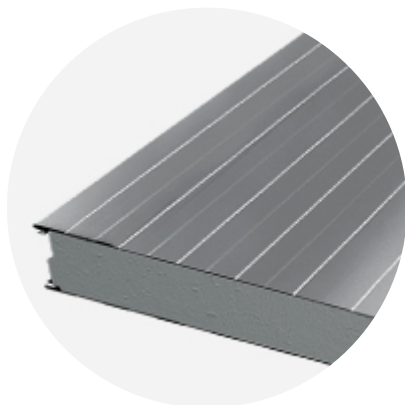


RAL9006 WHITE ALUMINIUM

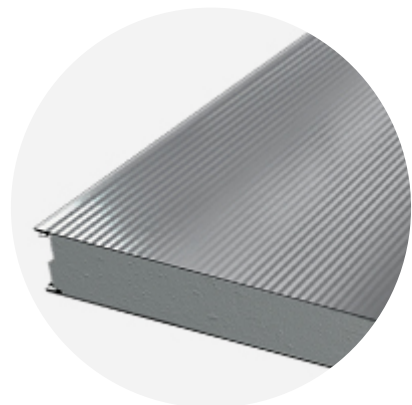


RAL9010 WHITE

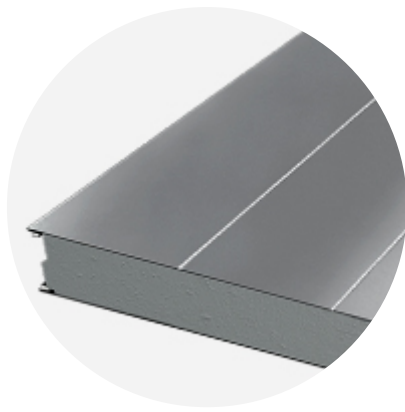
PROFILE OPTIONS



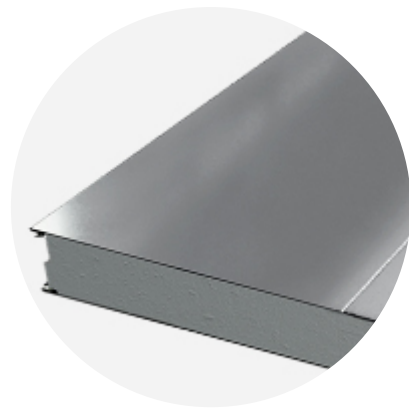
LINEAR



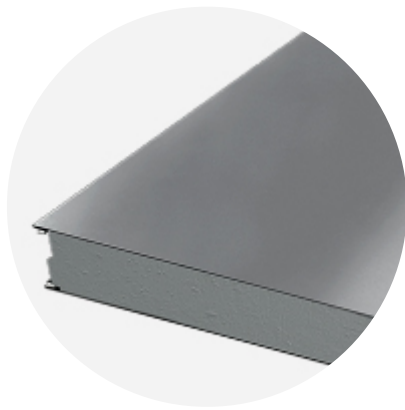
MICRO



RIB 275



RIB 550



FLAT

DESIGN TOOLS

To make both architectural and structural design work easier, with accurate product information in 3D form, we offer a selection of CAD / BIM -objects and software tools, which can be downloaded from the Software Toolbox portal.

READY MODELLED BIM OBJECTS

[Download objects for ArchiCAD](#)

[Download objects for Revit](#)

SOFTWARE TOOL TRAYPAN FOR CHOOSING THE OPTIMAL PANEL TYPE

User-friendly TrayPan software takes into account load, temperature, span, U-value, fire resistance and acoustics.

TrayPan contains two user interfaces:

- Optimisation tool for quick and easy pre-selection
- Designer version for detailed structural analysis.

[Download Traypan](#)

DETAIL DRAWING (.DWG)



05 MAY, 2016

Ruukki-Detail-drawings-SP2E-PIR_dwg_en
ZIP, 3.78 MB



05 MAY, 2016

Ruukki-Detail_drawings_SP2B_SP2C_SP2D_PIR_en
ZIP, 1.06 MB



05 MAY, 2016

Ruukki-Detail_drawings_SPB_SPC_SP2D_W_en
ZIP, 875.03 KB

LOAD & SPAN TABLES FOR DIMENSIONING PANELS AGAINST LOADS



05 MAY, 2016

Ruukki-load-tables-PU-core
PDF, 391.11 KB



05 MAY, 2016

Ruukki-sandwich-panels-span-tables-agripro-panels
PDF, 387.17 KB



05 MAY, 2016

Ruukki-load-tables-WE-ENG3
PDF, 295.41 KB



05 MAY, 2016

Ruukki-load-tables-W-ENG3
PDF, 315.97 KB



05 MAY, 2016

Ruukki-Sandwich-panels-Span_tables_SPF
PDF, 19.13 KB



05 MAY, 2016

Ruukki-load-tables-PIR-ENG5
PDF, 385.87 KB

ACCESSORIES

Accessories for sandwich panels include flashings, fasteners, gaskets, and sealing flanges.

These accessories ensure fast assembly, fastening reliability, joint tightness, and aesthetic improvement. They are suitable for external and internal wall surface construction, as well as roofs - for construction works of various sizes at any destination.



05 JUL, 2016

Ruukki accessories for sandwich panels 09.07.2015B
PDF, 3.46 MB

INSTRUCTIONS

ASSEMBLY INSTRUCTIONS

Assembly instructions document includes information about:

- Packing
- Transportation and unloading
- Storing
- Assembling



14 JUL, 2016

Ruukki-INOX-guidelines-for-PIR-sandwich-panels
PDF, 315.45 KB



05 MAY, 2016

Ruukki-Sandwich-panels-General_instructions_for_cold_storage_facilities
PDF, 1.58 MB



05 MAY, 2016

Ruukki-Assembly-instruction-for-sandwich-panels-CEE
PDF, 1.10 MB

MAINTENANCE INSTRUCTIONS

Maintenance instructions document contains information about:

- Washing
- Painting



06 MAY, 2016

Ruukki colour coated steel - Maintenance instructions
PDF, 600.37 KB



06 MAY, 2016

Ruukki powder coated facade claddings - Maintenance instructions
PDF, 602.18 KB

FACADE CLADDING INSTRUCTIONS

Ruukki Forma design instructions explain how to design façade cladding systems on top of Ruukki sandwich panels.



01 JUN, 2016

Ruukki Forma design instructions
PDF, 1012.64 KB

CERTIFICATES & APPROVALS

DECLARATION OF PERFORMANCE



13 JAN, 2020

Declaration of Performance 54/MW/OBO - Oborniki mineral wool cored panels (W, WF, WS)
PDF, 175.13 KB



13 JAN, 2020

Declaration of Performance 53/MW/OBO - Oborniki mineral wool cored panels (WEE, WE, WEF)
PDF, 336.94 KB



06 JUN, 2019

Declaration of Performance 29/E-PIR/OBO - Oborniki panels with PIR core (E-PIR, AgriPro)
PDF, 1.10 MB



06 JUN, 2019

Declaration of Performance 30/X-PIR/OBO - Oborniki panels with PIR core (X-PIR)
PDF, 903.75 KB



07 DEC, 2017

Declaration of Performance 37/X-PIR/OBO - SP2B X-PIR and SP2E X-PIR sandwich panels in stainless steel facing
PDF, 86.79 KB

ENVIRONMENTAL PRODUCT DECLARATION



05 MAY, 2016

Ruukki-Light-weight-sandwich-element-system
PDF, 5.97 MB