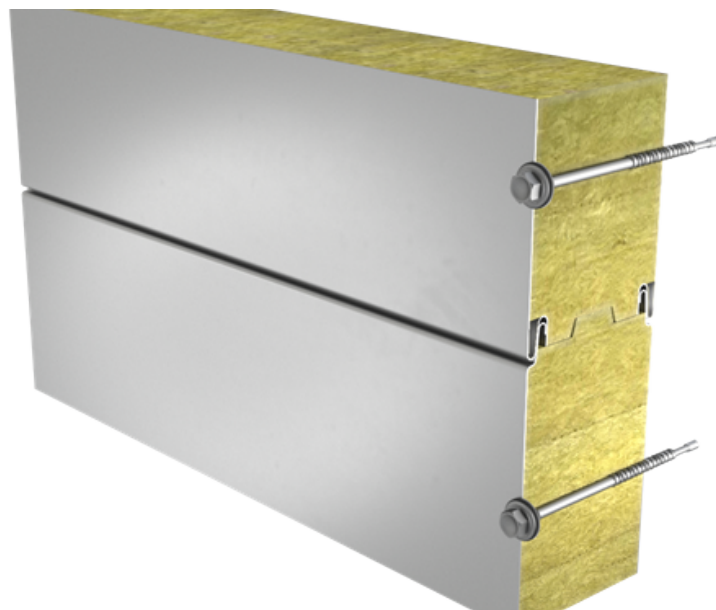


# SANDWICH PANEL SPB WS



Sandwich panel **SPB WS** is available in thicknesses 100 - 230 mm.

It is a perfect solution for most buildings and structures, combining **high quality** with **very good technical properties**. Advanced technology contributing to the improvement of **panel strength** ensures very good mechanical properties of this sandwich panel.

With the filling consisting of non-combustible and environmentally friendly hard mineral wool, this sandwich panel ensures **excellent fire resistance**. Properly milled core increases **air-tightness** and contributes to **outstanding sound insulation**.

## Application:

- External walls
- Internal walls
- Ceilings

The information on our website is accurate to the best of our knowledge and understanding. Although every effort has been made to ensure accuracy, the company cannot accept any responsibility for any direct or indirect damages resulting from possible errors or incorrect application of the information of this publication. We reserve the right to make changes.

# PROPERTIES

<b>Model name</b>	Sandwich panel SPB WS
<b>Standard module width</b>	1100 mm
<b>Optional module width (B)</b>	1000 mm
<b>Minimum length</b>	2000 mm
<b>Maximum Length</b>	12000 mm
<b>External facing thickness</b>	0.60 mm
<b>Internal facing thickness</b>	0.50 mm

## PROPERTIES BY PANEL THICKNESS

Thickness D (mm)	100	120	140	150	160	170	180	200	230
Weight (kg/m <sup>2</sup> )	22.4	24.8	27.2	28.4	29.6	30.8	32	34.4	38
U-value (W/m <sup>2</sup> K)	0.43	0.36	0.31	0.29	0.27	0.26	0.24	0.22	0.19
Sound insulation Rw (dB)	32	32	32	32	32	32	32	32	32
Reaction to fire	A2-s1, d0	A2-s1, d0	A2-s1, d0	A2-s1, d0	A2-s1, d0	A2-s1, d0	A2-s1, d0	A2-s1, d0	A2-s1, d0
<b>Wall fire resistance values &amp; max span horizontal / vertical orientation (m):</b>									
EI 30	7.5 / 7.5	7.5 / 7.5	7.5 / 7.5	7.5 / 7.5	7.5 / 7.5	7.5 / 7.5	7.5 / 7.5	7.5 / 7.5	7.5 / 7.5
EI 60	7.5 / 7.5	7.5 / 7.5	7.5 / 7.5	7.5 / 7.5	7.5 / 7.5	7.5 / 7.5	7.5 / 7.5	7.5 / 7.5	7.5 / 7.5
EI 90	-	-	7.5 / 7.5	7.5 / 7.5	7.5 / 7.5	7.5 / 7.5	7.5 / 7.5	7.5 / 7.5	7.5 / 7.5
EI 120	-	-	-	7.5 / 7.5	7.5 / 7.5	7.5 / 7.5	7.5 / 7.5	7.5 / 7.5	7.5 / 7.5

All properties are declared in accordance with EN 14509 and related standards.

**Changes to sandwich panel fire resistance standards (wall applications)**

# COATINGS AND COLOURS

## MATERIALS

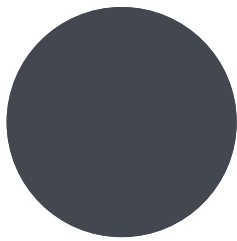
Facing	Coating	Corrosivity category	UV resistance	Colours
External	GreenCoat HIARC MAX	C4	Ruv4	RAL7035, RAL9006, RAL9007
External	Polyester	C3	Ruv2-3	RAL1015, RAL5005, RAL7015, RAL7035, RAL9002, RAL9006, RAL9007, RAL9010
Internal	Polyester	C3	-	RAL9002, RAL9010

UV resistance describes how well the coating is able to keep its original colour and gloss levels in accordance with EN10169. The higher the class, the better the resistance.

Corrosivity categories describe the outdoor climate conditions in accordance with EN12944. The higher the category, the more corrosive environment.

Read more about UV-resistance and corrosivity categories.

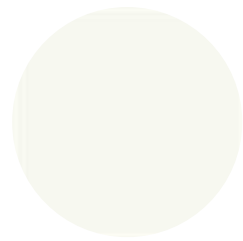
## COLOURS



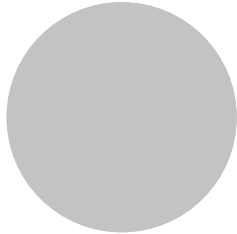
RAL 7015 SLATE GREY



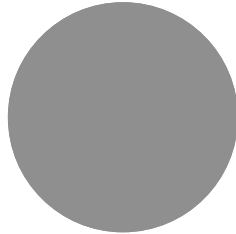
RAL9002 GREY WHITE



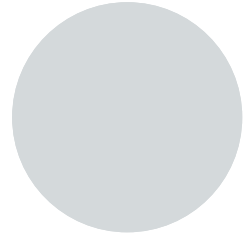
RAL9010 WHITE



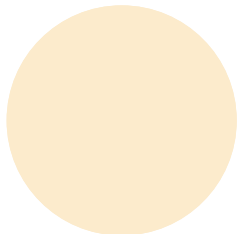
RAL9006 WHITE ALUMINIUM



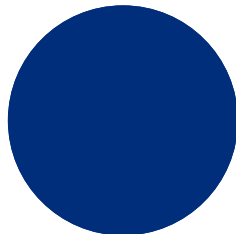
RAL9007 GREY ALUMINIUM



RAL7035 LIGHT GREY

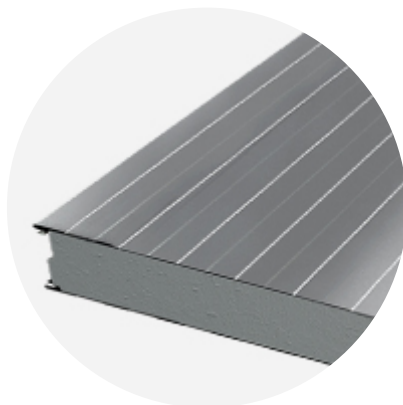


RAL1015 LIGHT IVORY

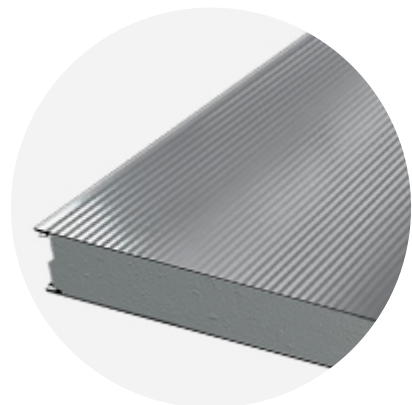


RAL5005 SIGNAL BLUE

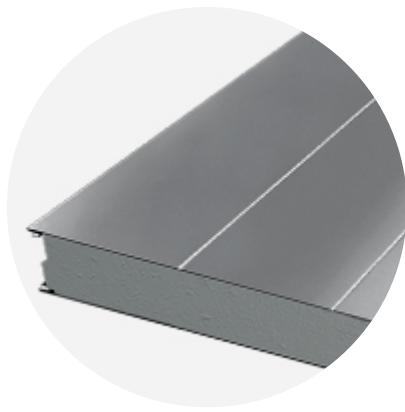
## PROFILE OPTIONS



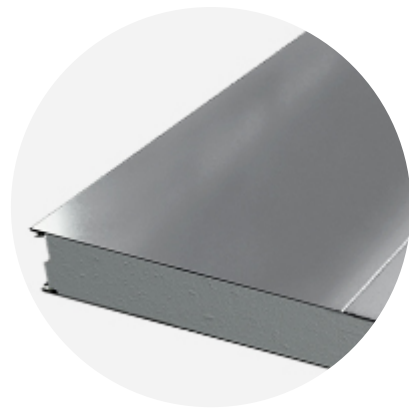
LINEAR



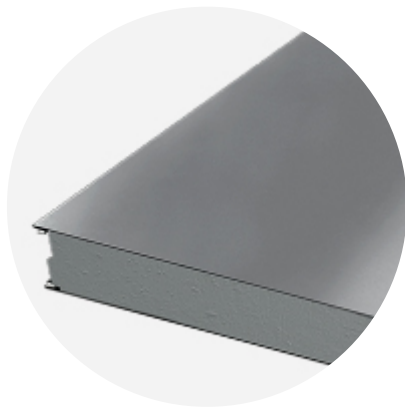
MICRO



RIB 275



RIB 550



FLAT

## DESIGN TOOLS

To make both architectural and structural design work easier, with accurate product information in 3D form, we offer a selection of CAD / BIM -objects and software tools, which can be downloaded from the Software Toolbox portal.

### READY MODELLED BIM OBJECTS

[Download objects for ArchiCAD](#)

[Download objects for Revit](#)

### SOFTWARE TOOL TRAYPAN FOR CHOOSING THE OPTIMAL PANEL TYPE

User-friendly TrayPan software takes into account load, temperature, span, U-value, fire resistance and acoustics.

TrayPan contains two user interfaces:

- Optimisation tool for quick and easy pre-selection
- Designer version for detailed structural analysis.

[Download Traypan](#)

### DETAIL DRAWING (.DWG)



**05 MAY, 2016**

Ruukki-Detail-drawings-SP2E-PIR\_dwg\_en  
ZIP, 3.78 MB



**05 MAY, 2016**

Ruukki-Detail\_drawings\_SP2B\_SP2C\_SP2D\_PIR\_en  
ZIP, 1.06 MB



**05 MAY, 2016**

Ruukki-Detail\_drawings\_SPB\_SPC\_SP2D\_W\_en  
ZIP, 875.03 KB

## LOAD & SPAN TABLES FOR DIMENSIONING PANELS AGAINST LOADS



**05 MAY, 2016**

Ruukki-load-tables-PU-core  
PDF, 391.11 KB



**05 MAY, 2016**

Ruukki-sandwich-panels-span-tables-agripro-panels  
PDF, 387.17 KB



**05 MAY, 2016**

Ruukki-load-tables-WE-ENG3  
PDF, 295.41 KB



**05 MAY, 2016**

Ruukki-load-tables-W-ENG3  
PDF, 315.97 KB



**05 MAY, 2016**

Ruukki-Sandwich-panels-Span\_tables\_SPF  
PDF, 19.13 KB



**05 MAY, 2016**

Ruukki-load-tables-PIR-ENG5  
PDF, 385.87 KB

## ACCESSORIES

Accessories for sandwich panels include flashings, fasteners, gaskets, and sealing flanges.

These accessories ensure fast assembly, fastening reliability, joint tightness, and aesthetic improvement. They are suitable for external and internal wall surface construction, as well as roofs - for construction works of various sizes at any destination.



**05 JUL, 2016**

Ruukki accessories for sandwich panels 09.07.2015B  
PDF, 3.46 MB

# INSTRUCTIONS

## ASSEMBLY INSTRUCTIONS

Assembly instructions document includes information about:

- Packing
- Transportation and unloading
- Storing
- Assembling



**14 JUL, 2016**

Ruukki-INOX-guidelines-for-PIR-sandwich-panels  
PDF, 315.45 KB



**05 MAY, 2016**

Ruukki-Sandwich-panels-General\_instructions\_for\_cold\_storage\_facilities  
PDF, 1.58 MB



**05 MAY, 2016**

Ruukki-Assembly-instruction-for-sandwich-panels-CEE  
PDF, 1.10 MB

## MAINTENANCE INSTRUCTIONS

Maintenance instructions document contains information about:

- Washing
- Painting



**06 MAY, 2016**

Ruukki colour coated steel - Maintenance instructions  
PDF, 600.37 KB



**06 MAY, 2016**

Ruukki powder coated facade claddings - Maintenance instructions  
PDF, 602.18 KB

## FACADE CLADDING INSTRUCTIONS

Ruukki Forma design instructions explain how to design façade cladding systems on top of Ruukki sandwich panels.



**01 JUN, 2016**

Ruukki Forma design instructions  
PDF, 1012.64 KB

## CERTIFICATES & APPROVALS

### DECLARATION OF PERFORMANCE



**13 JAN, 2020**

Declaration of Performance 54/MW/OBO - Oborniki mineral wool cored panels (W, WF, WS)  
PDF, 175.13 KB



**13 JAN, 2020**

Declaration of Performance 53/MW/OBO - Oborniki mineral wool cored panels (WEE, WE, WEF)  
PDF, 336.94 KB



**06 JUN, 2019**

Declaration of Performance 29/E-PIR/OBO - Oborniki panels with PIR core (E-PIR, AgriPro)  
PDF, 1.10 MB



**06 JUN, 2019**

Declaration of Performance 30/X-PIR/OBO - Oborniki panels with PIR core (X-PIR)  
PDF, 903.75 KB



**07 DEC, 2017**

Declaration of Performance 37/X-PIR/OBO - SP2B X-PIR and SP2E X-PIR sandwich panels in stainless steel facing  
PDF, 86.79 KB

## ENVIRONMENTAL PRODUCT DECLARATION



**05 MAY, 2016**

Ruukki-Light-weight-sandwich-element-system  
PDF, 5.97 MB